

Plastic Clip Spacer (Snap Chair) Installation Guide

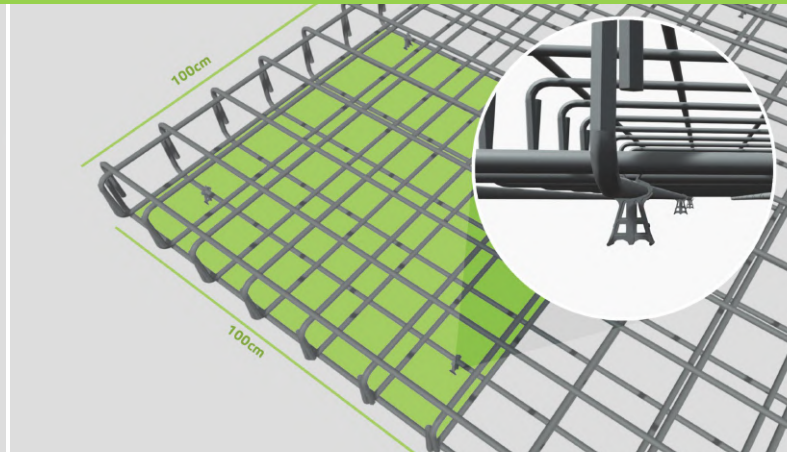
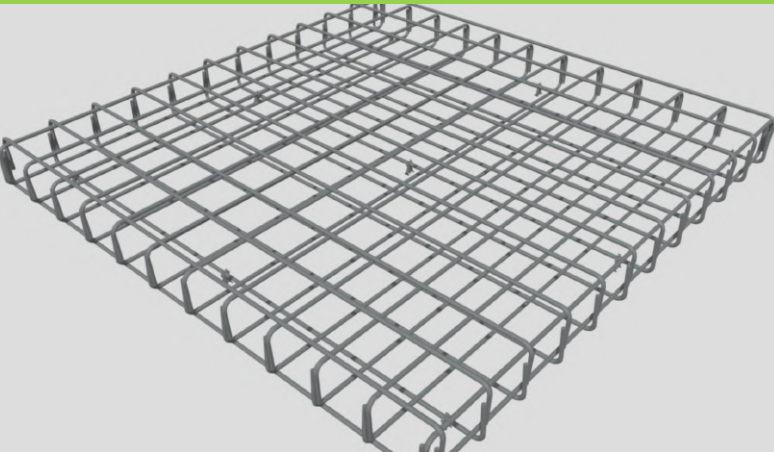
Applicability: 12mm, 16mm, 20mm, 25mm, 30mm, 40mm, 50mm, 60mm and 75mm clip spacers

Recommended Spacing:

- Legoplast recommends spacing clip spacers (snap chairs) 100 centimeters apart along the rebar length
- This translates to 2 to 4 clip spacers per square meter of the rebar cage

Recommended installation scheme: 100 x 100 cm

Compliant to CRSI Manual of Standard Practice (30th Edition), Chapter 3 and 8 recommendations



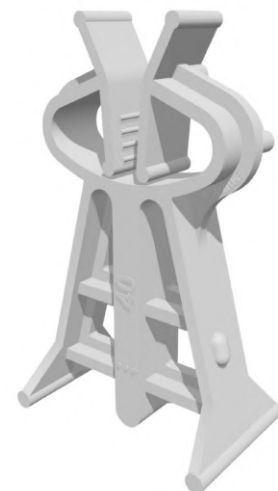
Comments for 100 x 100 cm installation scheme:

- Bottom cover height 40 mm (40mm Clip Spacers installed)
- Rebar: 2 layers of T16 steel reinforcement bars (16mm diameter)
- Slab depth: 30 centimeters
- Slab size: 5 meters x 5 meters (25 square meters)

Total 40mm Clip Spacers required: 36 spacers
(average of 1.4 clip spacers per 1 sq meter)

Importance of Strategic Placement:

The stability and strength of concrete structures heavily rely on the strategic placement of rebar supports. Proper spacing of rebar chairs ensures effective support for rebar during concrete pouring, uniform flow of concrete around the rebar and maintaining the desired concrete cover thickness. By carefully considering rebar chair spacing, you contribute to the overall strength and durability of the final structure



Additional Notes:

This guide is specific to 12mm, 16mm, 20mm, 25mm, 30mm, 40mm, 50mm, 60mm and 75mm clip spacers (snap chairs) produced by Legoplast Plastic Manufacturing L.L.C (Dubai, UAE). Refer to manufacturer's product data sheet for specific details on each type of product. Please consider consulting a structural engineer for complex projects to ensure optimal rebar support and spacing.

