

Plastic Rebar Spacer Installation Guide

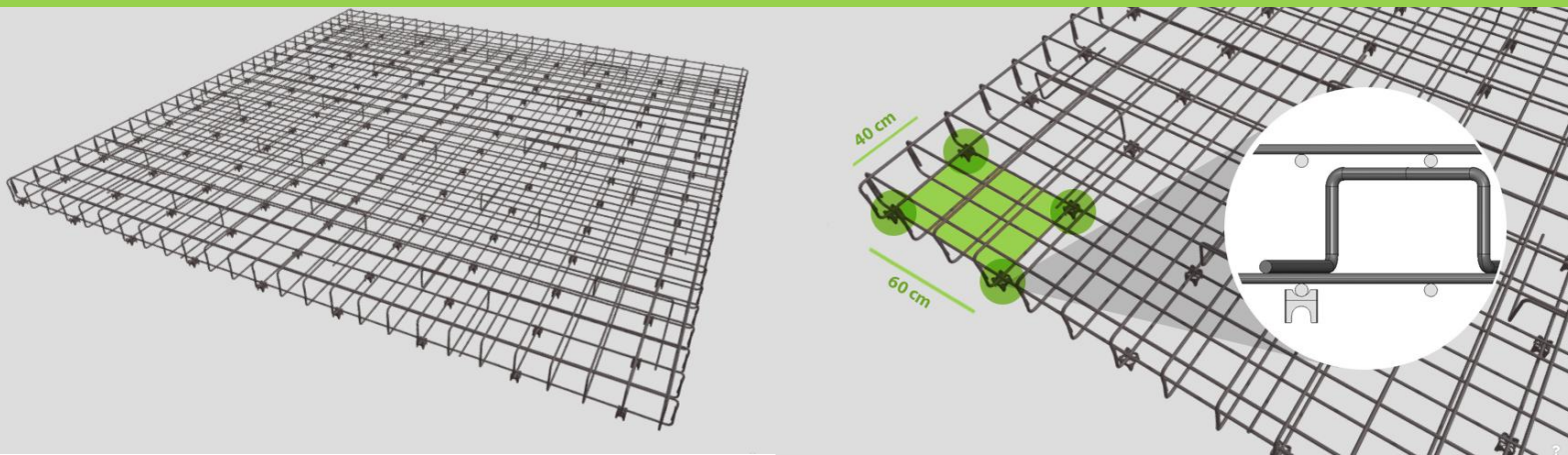
for Type 1 & Type 2 Cover Blocks (Chairs) by Legoplast Plastic Manufacturing L.L.C (UAE)

Recommended Spacing:

- Legoplast recommends spacing Type 1 and Type 2 chairs 40 to 60 centimeters apart along the rebar length
- This translates to 4 to 6 plastic rebar cover blocks (spacers) per square meter of the rebar cage

Option 1: 60 x 40 cm Scheme

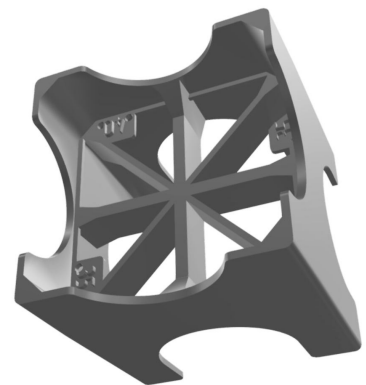
Compliant to CRSI Manual of Standard Practice (30th Edition), Chapter 3 and 8 recommendations



Example for Option 1 (40 x 60 cm):

- Bottom cover height: 40 mm
- Rebar: 2 layers of T16 steel reinforcement bars (16 mm diameter)
- Slab depth: 30 centimeters
- Slab size: 5 meters x 5 meters (25 square meters)

Total Type 1 cover blocks required: 117 (average 4.7 per sq meter)



Importance of Strategic Placement:

The stability and strength of concrete structures heavily rely on the strategic placement of rebar supports. Proper spacing of rebar chairs ensures effective support for rebar during concrete pouring, uniform flow of concrete around the rebar and maintaining the desired concrete cover thickness. By carefully considering rebar chair spacing, you contribute to the overall strength and durability of the final structure

Additional Notes:

This guide is specific to Type 1 and Type 2 chairs produced by Legoplast Plastic Manufacturing L.L.C (Dubai, UAE). Refer to the manufacturer's product data sheet for specific details on each type of product. Please consider consulting a structural engineer for complex projects to ensure optimal rebar support and spacing.

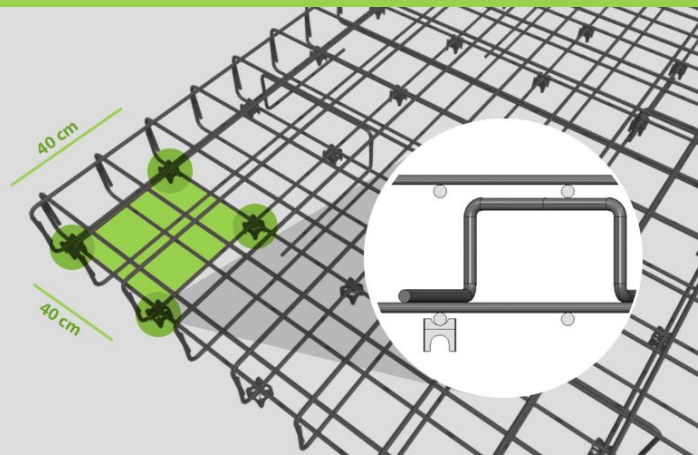
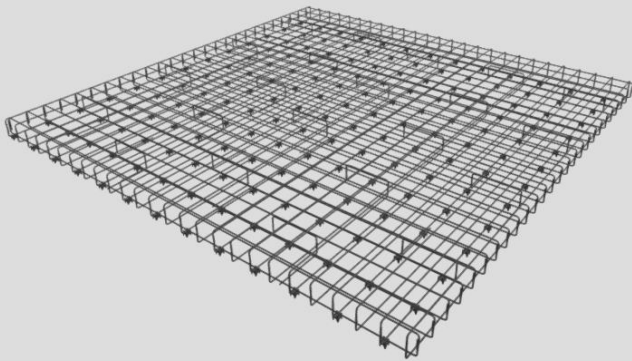


Recommended Spacing:

- Legoplast recommends spacing Type 1 and Type 2 chairs 40 to 60 centimeters apart along the rebar length
- This translates to 4 to 6 plastic rebar cover blocks (spacers) per square meter of the rebar cage

Option 2: 40 x 40 cm Scheme

Compliant to CRSI Manual of Standard Practice (30th Edition), Chapter 3 and 8 recommendations



Example for Option 2 (40 x 40 cm):

- Bottom cover height: 40 mm
- Rebar: 2 layers of T16 steel reinforcement bars (16 mm diameter)
- Slab depth: 30 centimeters
- Slab size: 5 meters x 5 meters (25 square meters)

Total Type 1 cover blocks required: 169 (average 6.8 per sq meter)



Importance of Strategic Placement:

The stability and strength of concrete structures heavily rely on the strategic placement of rebar supports. Proper spacing of rebar chairs ensures effective support for rebar during concrete pouring, uniform flow of concrete around the rebar and maintaining the desired concrete cover thickness. By carefully considering rebar chair spacing, you contribute to the overall strength and durability of the final structure.

Additional Notes:

This guide is specific to Type 1 and Type 2 chairs produced by Legoplast Plastic Manufacturing L.L.C (Dubai, UAE). Refer to the manufacturer's product data sheet for specific details on each type of product. Please consider consulting a structural engineer for complex projects to ensure optimal rebar support and spacing.

